



ROOFIVENT

ROOF VENTILATION SYSTEMS



PRODUCT CATALOG

www.roofivent.com

Roofivent is a leading innovator in ventilation solutions, dedicated to enhancing indoor air quality and energy efficiency for residential and commercial spaces. With a focus on advanced technology and sustainable practices, we design and manufacture a range of high-performance ventilation systems, including exhaust vents and attic ventilation solutions.

Our products feature cutting-edge designs, such as wind-powered turbines and efficient drainage systems, ensuring optimal airflow and moisture control. Committed to quality and durability, we back our solutions with extensive warranties, providing customers with peace of mind.

At Roofivent, we believe that effective ventilation is key to a healthy and comfortable environment. Our team of experts is passionate about delivering exceptional service and support, helping clients choose the right solutions for their specific needs. With a proven track record of innovation and reliability, Roofivent is your trusted partner in creating a better breathing space.

CATALOG CONTENT

PAGE

Our story	2
Why ROOFIVENT	3
Installation variability.....	4
iVent ECO.....	5.6
iVent ROTO	7.8
iVent ROTO attic	9.10
Wallvent	11.12
iVent FLOW.....	13
Cable Penetration	14
Pipe Penetration	15
iVent Turbo	16
Condensation collector.....	17
iFlex Pipe	18

OUR STORY & VISION

Everything starts somewhere, and every great journey has a story. Roofivent was born from the shared passion of two men dedicated to a singular vision: to revolutionize the roofing market with innovative, technologically advanced products.

Leveraging our extensive production expertise and the success of our European partner, Krono-Plast, we set out to create comprehensive ventilation solutions. Our collaboration with specialists in types of roofing ensures that we deliver top-tier products designed for superior performance.

Throughout our development process, we prioritize functionality, long-term reliability, and ease of installation. We believe that great products should not only perform well but also be user-friendly for our customers.

At Roofivent, our vision is clear: to provide the highest quality and most innovative products in the industry, complemented by unrivaled customer service and technical support. Join us on this journey as we continue to elevate standards in roofing ventilation solutions.



We use the highest proved quality materials. Resistant to UV and weather conditions.



We provide technical support and professional product advice.



Shipment of orders up to two working days from the moment of placing the order.



WHY ROOFIVENT?

At Roofivent, we are a forward-thinking company dedicated to innovation. Our products are engineered from high-quality materials and incorporate advanced features to deliver unmatched performance. By combining cutting-edge technologies, fundamental physical principles, and the expertise of roofing professionals, we develop ventilation solutions that are efficient, dependable, and designed for easy, reliable installation.

Superior Materials and Performance

- **Built to Last:** Manufactured from UV-stable pure polypropylene, our products offer exceptional durability and long-lasting performance.
- **Condensation Control:** Insulating properties of our material and an integrated drainage system effectively prevent moisture and frost buildup.
- **Year-Round Efficiency:** Aerodynamic designs ensure consistent air extraction in all weather conditions, eliminating the need for a backdraft damper.
- **Quiet and Durable:** Encapsulated bearings provide smooth, silent operation and extend the product's lifespan.

Easy Installation and Versatility

- **Versatile Applications:** Designed for kitchens, bathrooms, attics, and more.
- **Fast, Watertight Setup:** Variety of installation bases ensure watertight results on shingle, slate, shake, or metal roofs.
- **Precision and Flexibility:** Built-in leveling tools and adjustable designs accommodate roof pitches from 1/12 to 12/12 pitch.
- **Easy Inspection:** Easily disassembled for inspections without disturbing the roof structure.
- **Wide Compatibility:** Seamlessly integrates with new or existing 4", 5", or 6" ventilation systems.

Choosing Roofivent products provides outstanding benefits that significantly enhance the efficiency and reliability of ventilation and roofing systems, making our solutions a key differentiator in the market.

WHAT ARE THEY FOR?



IVENT **ECO**

Bathroom, Dryer, and
Kitchen Roof Exhaust Vent

IVENT **ROTO**

Active Bathroom and
Kitchen Roof Exhaust Vent



IVENT **ROTO
ATTIC**

Active Attic Exhaust Vent

IVENT **FLOW**

Attic Exhaust Vent



IVENT **PIPE
PENETRATION**

Pipe Roof Flashing

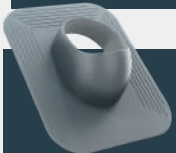
IVENT **CABLE
PENETRATION**

Cable Roof Flashing



READY FOR INSTALLATION

SHINGLES, SLATE, SHAKES



PG Base: Designed base feature a 4" flange and six backwater ribs for secure integration with roofing materials.



METAL ROOF



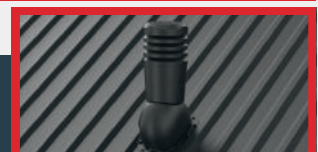
PI Base: Ideal for standing seam installations, it includes pre-installed 1/2" butyl tape for a reliable watertight seal.



MB 3/4" Base: Specifically for exposed fastener metal roofs, this base has a 3/4" high profile shaped over the rib, complete with pre-installed 1/2" butyl tape.



MB 1 1/4" Base: Tailored for exposed fastener metal roofs, this base feature a 1 1/4" high profile shaped over the rib, including pre-installed 1/2" butyl tape.



All bases with pre-installed butyl tape are backed by a 60-year warranty for waterproofness.



Discover the iVent ECO

the ultimate solution for bathroom, dryer, and kitchen exhaust ventilation that redefines industry standards. This innovative vent seamlessly combines functionality, durability, and effortless installation.

Performance-Driven Design:

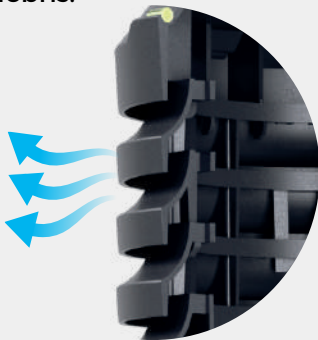
Engineered to optimize airflow efficiency, the iVent ECO incorporates advanced design features that guarantee exceptional performance, regardless of weather conditions.

BUILT-IN BUBBLE LEVELS

Facilitates precise positioning during installation, saving time and ensuring accurate placement.

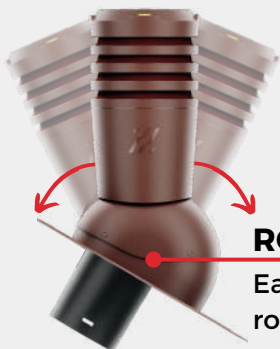
PROTECT AGAINST ELEMENTS

Safeguards the ventilation system from wind-driven rain, leaves and debris.



INSTALLATION

Compatible with PG, PI, MB3/4" and 1.1/4" bases.



ROOF PITCH REGULATION

Easily adjustable to accommodate roof slopes ranging from 1:12 to 12:12, ensuring a perfect fit every time.

OPTIMAL AIRFLOW EFFICIENCY

Designed for peak ventilation performance, maximizing airflow.

AERODYNAMIC DESIGN

Eliminates the need for a backdraft damper.

CONDENSATION DRAIN SYSTEM

Prevents moisture and frost buildup, safeguarding ventilation and home interior from leaks.

VENT INLET PIPE

This perpendicularly positioned element aligns with the roof slope, allowing for easy click-in connection with the iFLEX pipe. Compatible with existing 4", 5", or 6" duct.



Kitchen range hood - Bathroom vent - Dryer (once per year inspection required) - Attic vent

iVENT^{ECO}

Bathroom, Dryer, and Kitchen roof exhaust vent



TECHNICAL DATA:

DIAMETER:	4" / 5" / 6"
HEIGHT:	16"
MATERIAL:	UV stable pure polypropylene
WEIGHT:	4 lbs
ROOF PITCH REGULATION:	1:12 to 12:12
CONDENSATION DRAINAGE:	BUILT-IN

SET CONTAINS:

Installation base + Vent inlet pipe
iVent ECO vent body,
Set of screws,
Installation instructions.



SCAN AND SEE
ALL COLORS, PRODUCT CODES AND BASES VARIANTS:



Introducing the iVent ROTO

Advanced active ventilation system featuring a wind-powered turbine designed for effective air exhaust in kitchens and bathrooms. This innovative system seamlessly combines functionality, durability, and easy installation, setting a new standard in ventilation solutions.



BUILT-IN BUBBLE LEVEL

Integrated bubble level ensures precise positioning during installation ensuring a perfect fit every time.

TURBINE

Constructed from unique polypropylene, the wind-powered turbine is aerodynamically designed to maximize airflow in your ventilation system.

TURBINE BLADES

The aerodynamically optimized shape and angle of attack of the turbine blades ensure efficient rotation, even in light breezes.

CONDENSATION DRAINAGE SYSTEM

Equipped with an efficient condensate drainage system that prevents against moisture and frost, keeping your system dry and protecting your home from condensate leakage.

BALL BEARINGS

Featuring a superior encapsulated bearing system, this model includes two bearings immersed in high-quality oil for smooth, silent operation. This guarantees durability, reliability, and optimal performance for an extended product life.

INSTALLATION

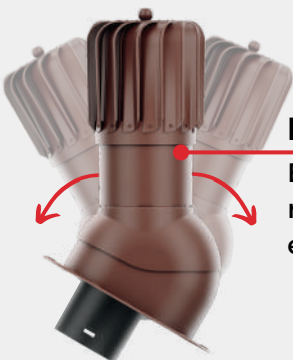
Compatible with PG, PI, MB3/4", MB1.1/4" bases.

VENT INLET PIPE

This perpendicularly positioned element aligns with the roof slope, providing an easy click-in connection with the iFLEX pipe. It is fully compatible with existing 4", 5", or 6" ducts.

ROOF PITCH REGULATION

Easily adjustable to accommodate roof slopes ranging from 1:12 to 12:12, ensuring a perfect fit every time.



TWO SHAPES, SAME PERFORMANCE

Choice between two turbine head shapes—round or oblong—without compromising performance.



iVENT ROTO

Active Bathroom and Kitchen Roof Exhaust Vent



TECHNICAL DATA:

DIAMETER:	4" / 5" / 6"
HEIGHT:	16"
MATERIAL:	UV stable pure polypropylene
WEIGHT:	5 lbs
ROOF PITCH REGULATION:	1:12 to 12:12
BEARINGS:	Encapsulated bearing system with two bearings immersed in high-quality oil
CONDENSATION DRAINAGE:	BUILT-IN
SET CONTAINS:	Installation base, vent inlet pipe iVent ROTO vent body, Set of screws, Installation instructions.



SCAN AND SEE
ALL COLORS, PRODUCT CODES AND BASES VARIANTS:

Introducing the iVent ROTO ATTIC

The ultimate top-of-the-line of attic ventilation solutions. This advanced active exhaust ventilation system features a wind-powered turbine constructed from unique polypropylene, engineered to deliver reliable airflow in your attic. It effectively maintains optimal temperature and moisture levels, preventing issues such as mold growth and ice dam formation. Combining innovation and efficiency, iVent ROTO offers unrivaled functionality, durability, and easy installation.



BUILT-IN BUBBLE LEVEL

Integrated bubble level ensures precise positioning during installation ensuring a perfect fit every time.

TURBINE BLADES

The aerodynamically optimized shape and angle of attack of the turbine blades ensure efficient rotation, even in light breezes.

BALL BEARINGS

Equipped with a superior encapsulated bearing system, this model features two bearings immersed in high-quality oil for smooth, silent operation. This guarantees durability, reliability, and optimal performance for an extended product life.

INSTALLATION

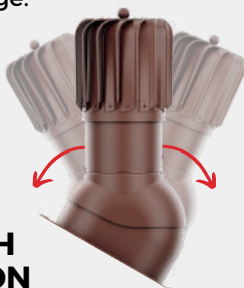
Compatible with PG, PI, MB3/4", MB1.1/4" bases.

TURBINE

The wind-powered turbine, made from unique polypropylene, is aerodynamically designed to optimize constant airflow in the attic.

CONDENSATION DRAINAGE SYSTEM

Protects your attic from moisture and frost, ensuring it remains dry in all weather conditions. Safeguards the roof structure from condensation and moisture damage.



ROOF PITCH REGULATION

Easily adjustable to accommodate roof slopes ranging from 1:12 to 12:12, ensuring a perfect fit every time.

TWO SHAPES, SAME PERFORMANCE

Choice between two turbine head shapes—round or oblong—without compromising performance.






PLACEMENT AND INSTALLATION GUIDE

Achieving optimal performance with the iVent ROTO Attic requires attention to placement and installation.

- **Vent Location:** When determining the location of the vents, ensure they are evenly spaced along the ridge line. Always position vents between the rafters for optimal airflow.
- **Installation of Two iVent ROTO Attic:** For installations involving two vents, it is recommended to position them at 1/4 of the total length of the ridge, starting from the edge of the roof or the end of the ridge. This placement ensures even airflow and efficiency.
- **Installation of Three iVent ROTO Attic:** If installing three turbines, place them at 1/6 of the total length of the ridge from the edge of the roof, with an additional turbine installed in the center of the roof. This configuration ensures even ventilation along the ridge.
- **HEIGHT OF VENT INSTALLATION:** The height at which the vent is installed depends on the slope of the roof. For optimal performance, ensure that the turbine extends at least 2 inches above the ridge level to reach efficient airflow.
- **MINIMUM INSTALLATION HEIGHT:** To prevent performance issues, do not install the vent lower than 3 feet from the roof ridge level. Maintaining this height is crucial for effective ventilation.

Avoid Conflicts with Static or Powered Vents: Do not install the iVent ROTO in conjunction with static or powered vents, as these can inadvertently function as intake vents in certain situations. This can disrupt the intended airflow dynamics.

Maintain Balanced Ventilation: An integral part of effective attic ventilation is achieving a proper balance between exhaust and intake vents. Aim for a 50/50 distribution—50% intake and 50% exhaust. This balance is crucial for optimal airflow and overall ventilation performance.

Ensure Functionality of Intake Vents: Verify that all intake vents are unobstructed and allow for adequate air flow. Just because the grille of the intake vent in the soffit is visible does not guarantee that it is functioning properly. Regularly check for blockages from insulation, debris, or other materials that may impede airflow.

BY FOLLOWING THESE INSTRUCTIONS, YOU WILL ENSURE THE DESIRED PERFORMANCE AND EFFICIENCY OF THE iVENT ROTO ATTIC VENTILATION SYSTEM.

ATTIC VENTILATION PERFORMANCE

1 unit iVent ROTO provides an impressive 450 sq. ft. of attic Net Free Area (NFA) balanced with 120 sq. in. of intake, adhering to the 1/300 attic ventilation ratio.

According to the 2012 International Residential Building Code (IRC), Section R806 – Roof Ventilation:

- The minimum net free ventilating area must be 1/150 of the vented space.
- However, a ratio of 1/300 is commonly used when specific conditions are met, such as installing a Class I or II vapor retarder in certain climate zones 6, 7, 8.
- Or at least 40 percent and not more than 50 percent of the required ventilating area is provided by ventilators located in the upper portion of the attic or rafter space.

For optimal compliance, if your local code requires a ventilation ratio of 1/150, simply double the request.

Wall-Mounted Unique Vent Solution

Our wall-mounted horizontal vent is designed to provide effective venting and ventilation in areas where roof ventilation is not possible. Featuring a horizontal termination with a wind turbine, this innovative solution significantly enhances air draft throughout the ventilation system, improving air circulation within the building and effectively removing moist, stale air.

WALLVENT roto

Ideal for:

- Kitchen range hoods
- Bathroom vents
- Dryers (annual inspection required)
- Building foundations

AIR FLOW TURBINE

The aerodynamically designed turbine blades facilitate quiet operation and highly efficient air movement, even in light winds.

DURABLE MATERIAL

Crafted from high-quality UV stable pure polypropylene, our products offer exceptional color fastness, durability, and weather resistance.

LOWER OPENING WITH GRID

The lower opening, equipped with a grid that matches the vent's shape, promotes horizontal air flow, and effectively drains any condensation from the system.



BUILT-IN BUBBLE LEVEL

Integrated bubble level ensures precise vertical positioning during installation ensuring a perfect fit every time.

BEARINGS

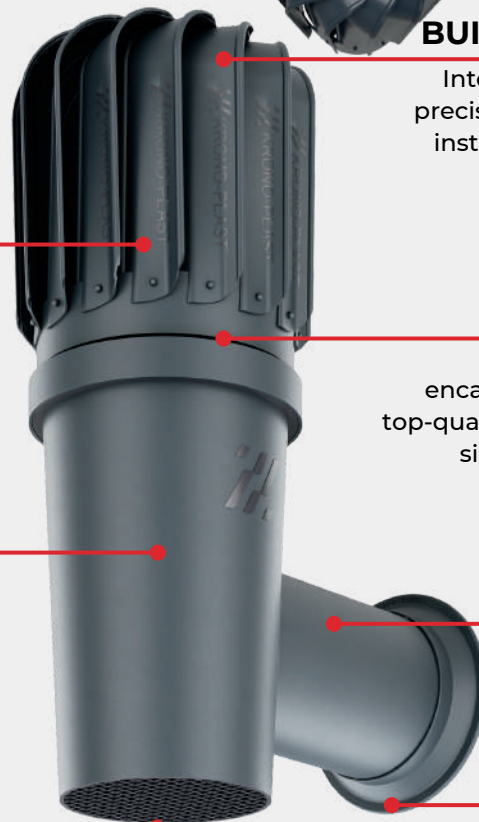
Our design includes two encapsulated bearings filled with top-quality oil, ensuring long-lasting, silent operation of the turbine.

VENT INLET PIPE

Diameter: 4,1/4" for easy connection with 4" duct.

PASSAGE COVER

This feature provides cover insulation and sealing of the pipe penetration through the wall, thereby protecting the penetration from weathering.



COLORS



BROWN

WV-NRP-4-01

BLACK

WV-NRP-4-02

GRAPHITE

WV-NRP-4-09

LIGHT GREY

WV-NRP-4-10

Wall-Mounted Horizontal Vent Solution

Our wall-mounted horizontal vent is expertly designed to provide effective ventilation in locations where roof venting is not possible. The horizontal termination enhances air flow throughout the ventilation system, improving air circulation within the building and efficiently removing moist, stale air.

WALLVENT eco

Ideal for:

- Kitchen range hoods
- Bathroom vents
- Dryer (annual inspection required)

BUILT-IN BUBBLE LEVELS

Integrated bubble level ensures precise vertical positioning during installation ensuring a perfect fit every time.

AIR FLOW RINGS

The specially designed shape of the rings promotes unrestricted air flow while preventing the ingress of rainwater, leaves, and debris.

DURABLE MATERIAL

Crafted from high-quality UV stable pure polypropylene, our products offer exceptional color fastness, durability, and weather resistance.

VENT INLET PIPE

diameter: 4,1/4" for easy connection with 4" duct.

LOWER OPENING WITH GRID

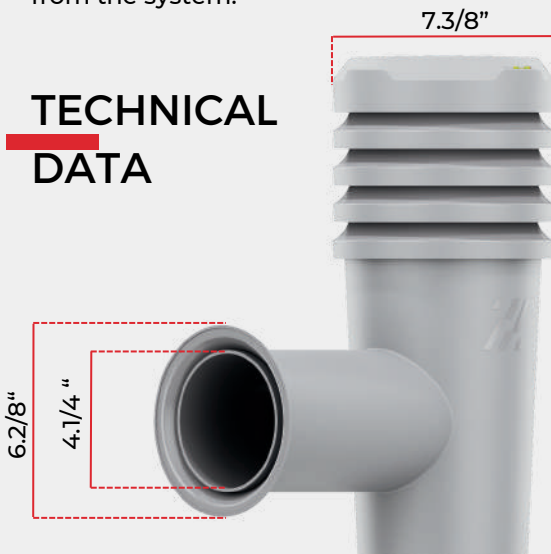
The lower opening, equipped with a grid that matches the vent's shape, promotes horizontal air flow, and effectively drains any condensation from the system.

PASSAGE COVER

This feature provides cover insulation and sealing of the pipe penetration through the wall, thereby protecting the penetration from weathering.



TECHNICAL DATA



COLORS

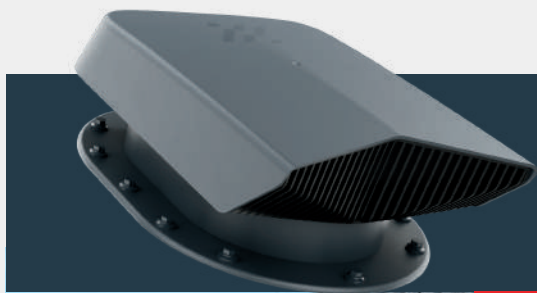


BROWN
WV-NKO-4-01

BLACK
WV-NKO-4-02

GRAPHITE
WV-NKO-4-09

LIGHT GREY
WV-NKO-4-10



Aerodynamically designed for effective attic ventilation, our roof vents ensure proper ventilation of the attic.



DESIGN

The aerodynamically contoured head diverts condensation to the sides and directs it toward the vent exhaust. The designed shape allows for maximum airflow through the vent, even with a low-profile design.

DURABILITY

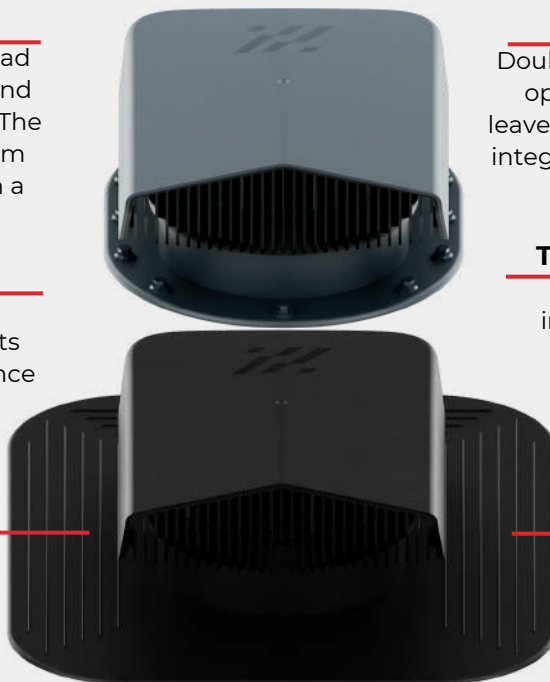
Constructed from high-quality, UV stable pure polypropylene, our vents maintain their color and performance over the years.

UNIVERSAL FIT

Designed for easy installation on both new and existing roofs, including standing seam, cedar, and asphalt shingles.

UNIQUE DESIGN

Allows opening at any time without tools for inspection or maintenance. Without interfering with the waterproof connection to the roof.



PROTECTION GRILLE

Double grille protects the ventilation opening from birds, small animals, leaves, and other debris, ensuring the integrity of the ventilated attic space.

TEMPERATURE REGULATION

Helps reduce temperature impacts on roofing materials and prevents condensation in the attic and roof structure.

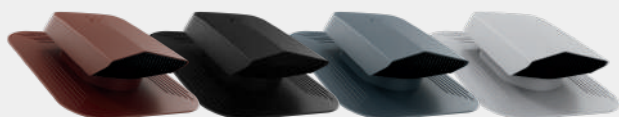
ATTIC SPACE VENTILATION

Provides an effective air flow that ventilates the attic, minimizing temperature fluctuations and their impact on the building.

NFA: 53 sq. in. = 0.37 sq. ft.

COLORS

SHINGLE, SLATE, SHAKE



WP-2-01-PG brown WP-2-02-PG black WP-2-09-PG graphite WP-2-10-PG light grey

STANDING SEAM/ SNAP LOCK



WP-2-01-PI brown WP-2-02-PI black WP-2-09-PI graphite WP-2-10-PI light grey

CABLE ROOF PENETRATION



System Solution for Cable Penetration

Designed to provide an efficient and reliable roof penetration solution for solar or antenna cables. It is designed for easy installation and provides reliable protection against the weather where the cables penetrate the roof.



TIGHTNESS

The EPDM rubber ensures a secure seal for cable up to 1" diameter. This durable material is UV resistant, preventing crumbling and hardening over time.

MATERIAL

Constructed from high-quality, UV stable pure polypropylene, our vents maintain their color and performance over the years.

COLORS

Available in colors that match our vertical vents, ensuring a consistent look that blends seamlessly with your roofing.



UNIQUE DESIGN

Allows opening at any time without tools for inspection or maintenance. Without interfering with the waterproof connection to the roof.

EASY INSTALLATION

The set includes all necessary components for assembly, except for a screwdriver, making installation reliable straightforward and hassle-free.

VARIETY OF BASES

Compatible with shingles, slate, and standing seam roofs, offering versatile installation options.

COLORS

SHINGLE, SLATE, SHAKE



PS-2-01-PG
brown

PS-2-02-PG
black

PS-2-09-PG
graphite

PS-2-10-PG
light grey

STANDING SEAM/ SNAP LOCK



PS-2-01-PI
brown

PS-2-02-PI
black

PS-2-09-PI
graphite

PS-2-10-PI
light grey

iVent Pipe Flashing

Resistant penetration solution for ventilation pipe. Our ventilation pipe flashing is designed to provide penetration protection and a reliable waterproof solution. The innovative design allows simple replacement of the seal without the need to disrupt the connection to the roof, so maintenance or repair is quick and hassle-free.



EPDM SEAL

Universal UV resistant seal. A solution that allows for easy replacement.

DURABLE CONSTRUCTION

Crafted from high-quality UV stable pure polypropylene, offering exceptional color fastness, durability, and weather resistance all year round.

ROOF PITCH REGULATION

Easily adjustable to accommodate roof slopes ranging from 1:12 to 12:12, ensuring variety and perfect fit every time.



VERSALITY

Securely seals penetration around pipes from 1" to 3" in diameter.

EASY INSTALLATION

The design ensures a very simple and reliable installation.

INSTALLATION BASE

Compatible with PG, PI, MB3/4", MB1,1/4" bases.

COLORS

SHINGLE, SLATE, SHAKE



PP-1-01-PG
brown

PP-1-02-PG
black

PP-1-09-PG
graphite

PP-1-10-PG
light grey

STANDING SEAM/ SNAP LOCK



PP-1-01-PI
brown

PP-1-02-PI
black

PP-1-09-PI
graphite

PP-1-10-PI
light grey



iVent TURBO

an aerodynamically engineered turbine head designed to significantly enhance the air flow in existing ventilation systems. Available in both round and oblong designs, and comes in two convenient sizes: 6" and 8". The 6" size can be equipped with an attachment with a condensation drainage system. This innovative solution not only optimizes airflow but also improves overall ventilation efficiency.

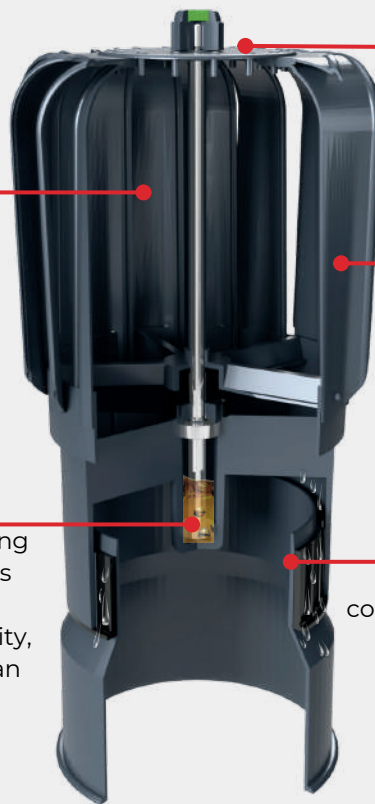


TURBINE

The innovative concept and construction of our turbines from UV stable pure polypropylene guarantee unmatched durability, exceptional airflow and reliable, long-term functionality.

BALL BEARINGS

Featuring a superior encapsulated bearing system, this model includes two bearings immersed in high-quality oil for smooth, silent operation. This guarantees durability, reliability, and optimal performance for an extended product life.



BUILT-IN BUBBLE LEVEL

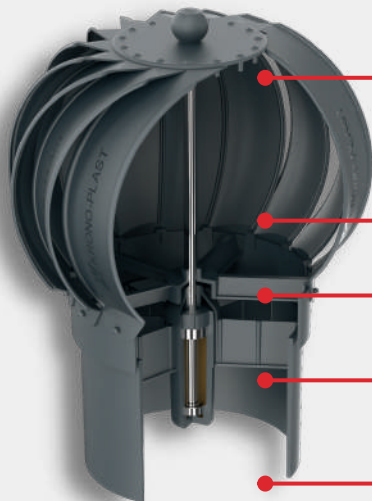
Integrated bubble level ensures precise vertical positioning during installation ensuring a perfect fit every time.

TURBINE BLADES

The aerodynamically optimized shape and angle of attack of the turbine blades ensure efficient rotation, even in light breezes.

CONDENSATION DRAINAGE SYSTEM

Size 6" equipped with an efficient condensate drainage system located below the turbine, protects ventilation system against moisture and frost, ensuring the system dry and efficient in all weather conditions.



TWO SHAPES, SAME PERFORMANCE

Choice between two turbine head shapes—round or oblong—without compromising performance.

DIAMETER

6" or 8"

MATERIAL

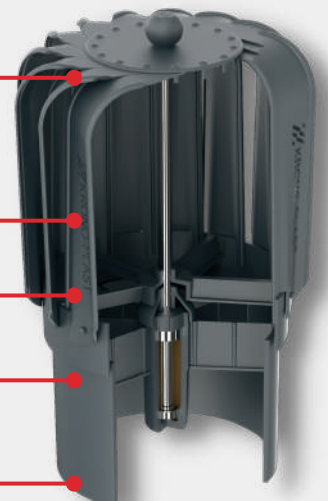
UV stable pure polypropylene

BEARINGS

encapsulated bearing system with two bearings immersed in high-quality oil.

CONDENSATION DRAINAGE

6" size only.



iVENT CONDENSATION COLLECTOR



Effective protection of the ventilation system against condensation.

The iVent Condensation Collector is a revolutionary solution designed to protect ventilation system from condensation. Especially in colder areas where increased condensation can be expected due to higher temperature differences between the exhaust air in the duct and the outside temperature. By preventing condensate from flowing into the system or fan, it ensures optimal performance and protects your entire ventilation setup from significant damage.

UNIVERSAL COMPATIBILITY

The collector is available in two sizes (5" and 6" diameter) and is fully compatible with Roofivent vents and iFLEX connection pipes.

EASY TO INSTALL

The snap-on mounting mechanism requires no additional tools, allowing for quick and straightforward installation with any Roofivent vertical vent.



SAFETY FIRST

Effectively captures condensation that can form above. Prevents condensate from escaping into the interior and protects the internal fan from damage.

GENEROUS CAPACITY

Holds approximately 27 fl oz of condensate, ensuring effective control of excess moisture.

FLEXIBLE DISCHARGE OPTIONS

The kit includes 4 feet of condensate drainage tubing, which can be used to empty the collector or check the amount of condensate collected.



CODE:

SKR-1

SKR-2

Diameter:

5"

6"

The iFlex Pipe is designed to provide a solid and reliable connection between exhaust vents and ventilation systems. Engineered for optimal performance and reducing the risk of air leaks. Its durable construction and flexibility with snap-in connectors make installation reliable and hassle-free.

6"

5"



COMPATIBILITY

It is compatible with all variants of Roofivent vertical exhaust vents and condensation collectors.

MULTIPLE REDUCTION

- 6" diameter s equipped with a reduction from 6" to 5" diameter
- 5" diameter s equipped with a pyramid reduction from 5" to 4" and 3" diameter

DIMENSIONS

Available in two diameters 5" and 6"
Length 20" and 40"

FLEXIBILITY

pipe flexibility allows free bending without changing the diameter.

FLAME RETARDANT

M1 fire resistance class.



CODE:	KFP-5-20	KFP-5-40	KFP-6-20	KFP-6-40
Diameter:	5"	5"	6"	6"
Length:	20"	40"	20"	40"
Reduction:	4.3", 4", 3"	4.3", 4", 3"	6", 5"	6", 5"

Accessories

REDUCTION from 6" to 5" to 4"

It enables easy and universal connection of the vent to the existing duct.



PYRAMID REDUCTION 5"

It enables easy and universal connection of the 5" vent to the existing duct 4" and 3" diameter.





“The details make the roof.”

The roof is more than just a structure—it's your home's ultimate defender and a statement of elegance.

It's your first and strongest line of defense against the relentless forces of nature – whether it's heavy rain, snow, hail, or high winds. With the ability to withstand temperature fluctuations during the day and night, the roof must be durable and reliable to protect the house 24 hours a day, 7 days a week, all year round.

Combining quality roofing materials with reliable accessories is key to ensuring the strength and longevity of your roofing system.

Explore the Accessories That Will Guarantee You a Durable and Reliable Roof!

ROOFIVENT LLC.
8330 S Madison St, suite 70,
Burr Ridge,
IL 60527, US
Cell: +1 (708) 618 9525

FIND OUT MORE:



v.1.2