

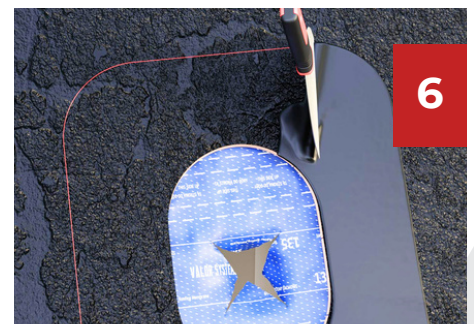
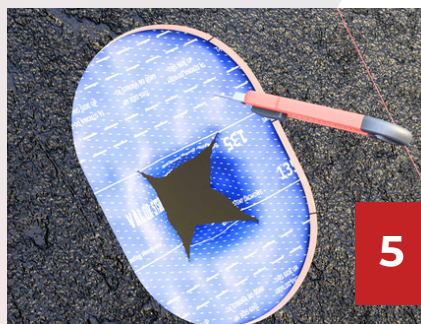
For the product line - IVENT ECO, IVENT ROTO, IVENT FLOW on Shingle or Slate roofs.

Do not use these products for fireplace chimney and stovepipe.

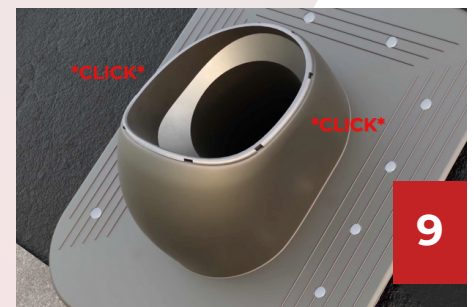
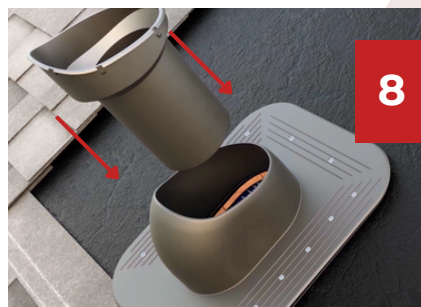
1. Place the base where it is to be installed. Mark the hole in the cover by drawing it from inside the vent base (pic.1)
2. Drill several nail holes in to the third row of the flat part of the base (pic. 3)



3. Cut out the hole marked on the roof (pic. 4, 5). When cutting, remember to use the appropriate tools for the material being cut.



4. Clean the surface around the opening and then apply sealing (roofing sealant - not included) to the prepared surface (pic. 6). Evenly press the base and then fasten with roofing nails through the predrilled holes (pic. 7).

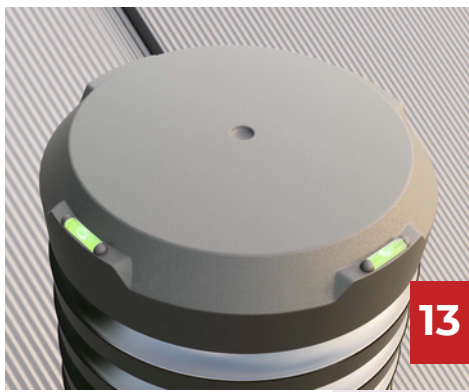


5. Insert the exhaust pipe into the base and latch it (pic. 8, 9).

6. Cover the flat part of the base with bitumen sealant (pic. 10) and replace the shingles/roofing felt, that has been pre-cut around the protruding element of the base(pic. 11).



7. Place the vertical vent on the screwed base (pic.12).



8. Level it vertically (pic. 13)and connect it to the base with screws - 4 pcs (pic. 14).
The recommended installation temperature is between +41°F and +104°F.
Do not strike the plastic base with a hammer. This may damage the product.

LIFETIME GUARANTEE

Roofivent LLC gives a lifetime guarantee on functionality of these products. Guarantee doesn't include replacement due to destructive storms. In case of any problem with Roofivent products, contact us: office@roofivent.com.

