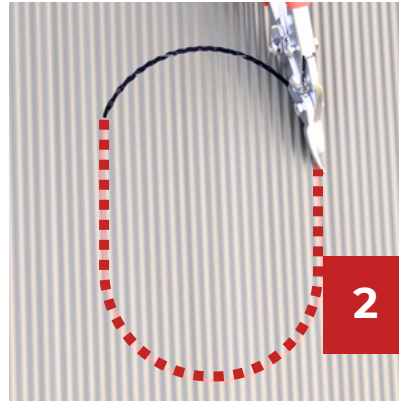
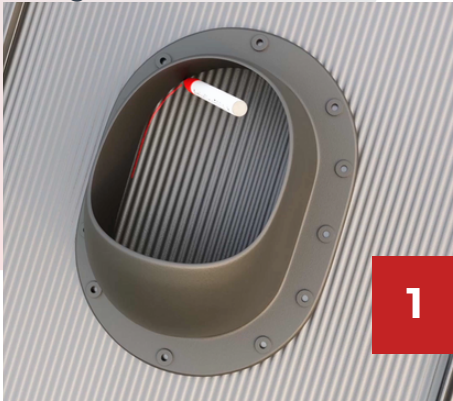


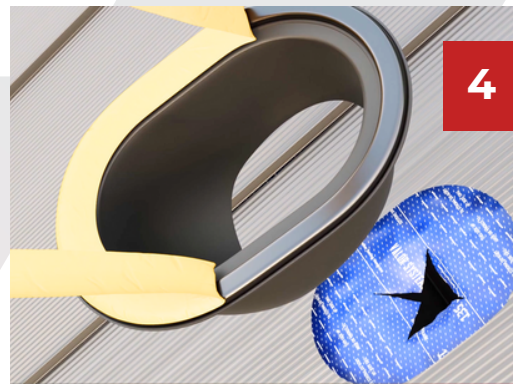
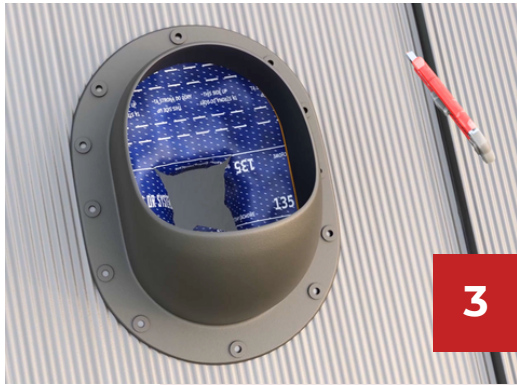
For the product line - IVENT ECO, IVENT ROTO, IVENT FLOW on Standing seam and Metal roofs.

Do not use these products for fireplace chimney and stovepipe.

1. Mark the hole in the cover by drawing it on the cover from the inner hole of the base (1).
2. Cut out the traced hole (2). When cutting, remember to use the appropriate tools, adapted to the material being cut.



3. Clean and degrease the surface on which the butyl gasket will be fixed.
4. Tear off the tape securing the butyl seal (4), then place the base around the cut hole and press it down. Fasten with farmer screws in the following order - top screw, bottom screw and sides (5)



5. Insert the exhaust pipe into the base and latch (6, 7).



6. Put the vertical vent on the base (8), adjust it vertically (9) and stabilize it by screwing the base with the vent with screws -4 pcs, 2 for each side (10).



7. The recommended installation temperature is +41°F to +104°F.

8. Do not hit the plastic base with a hammer, do not over tighten it. This may damage the product.

LIFETIME GUARANTEE

Roofivent LLC gives a lifetime guarantee on functionality of these products. Guarantee doesn't include replacement due to destructive storms. In case of any problem with Roofivent products, contact us: office@roofivent.com.

