

iVENT flow

iVent Flow is a very low-profile, aerodynamically designed efficient vent for ventilating attic or roof spaces.

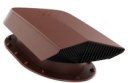
Product bases are available in two variants. PG - variant is designed for easy installation with shingle, slate roofing. PI - variant is pre-prepared with 3/8" butyl tape for waterproof installation on a standing seam or retrofitting on a shingle.

The designed head shape diverts condensation to the sides and towards the ventilation exhaust. The shape of the head of the cover allows maximum opening for air flow through the ventilation hole. The protective grid with vertical ribs effectively protects the vent from birds, small animals, leaves, and other debris.



		
Product code:	WP-2-__-PG	WP-2-__-PI
NFA:	53s q. in	53s q. in
Base dimensions (in.) L x W	18.1 x 14.6	12.7 x 9.5
Height:	4"	4"
Weight:	1.95 lbs	1.90 lbs
Roof pitch:	Slope roofs from 15 degrees	
Material:	high quality polypropylene, UV resistant	

Available colors:



brown



black



brickred



graphite



grey